



Members at Large (MAL) FY21 Newsletter, Issue 1

Page 1

To the Membership: It has been a while since we asked for your options and feedback, which is why we are asking for your input now. Take a few minutes to fill out the survey and know we truly appreciate your help. If you have any issues with the link, please cut and paste into your favorite internet explorer.

Link to survey monkey <https://www.surveymonkey.com/r/GBK35X3>

INSIDE THIS ISSUE:

MAL Survey	Page 1
President's Corner	Page 2
Meet the FY21 MAL Leadership Team	Page 2
Information for WE 20 Conference	Page 5
MAL Receive SWE Awards at WE20	Page 6
MAL Awards Program	
Manufacturing Institute's STEP Ahead Awards Nominations	Page 6
Outreach	Page 8
Save the date for MAL Professional Development workshop	Page 9
SWE Governance and MAL Bylaws Updates	Page 10
MAL Leadership Contacts list	Page 13
Find us on Social Media	Page 12
Writers Wanted	Page 13



Members at Large (MAL) FY21 Newsletter, Issue 1

Page 2

President's Corner

As we kick off FY21, the world looks very different in the midst of the COVID-19 pandemic. Throughout my career, SWE has been a source of constant support, and I find that it continues to be as I navigate this new world, we live in. I'm thrilled to be back as president this year working with our new MAL leadership team. This year on the executive committee serving the MALs are Vice President Victoria Tinsley, Secretary Laurel Rowse, Treasurer Claire Shortall, Director – Outreach Stacey Culver, and Director – Communications Rosemarie Trausch. In this newsletter you can read more about your FY21 MAL leaders.

WE20 is fast approaching and will be an all virtual conference this year. If you haven't registered already, I hope that you're able to take some time to join fellow SWE members for this event. Associated with WE20, please also join us for the MAL Meeting to be held virtually the last week of October. Here you can learn more about the status and goals of the MAL organization, and also connect with fellow MAL members.

Finally, the MAL leadership team wants to learn more about how we can better support the MAL membership – so please indicate your interests by responding to the short survey recently distributed (and linked in these pages).

I wish you a safe and healthy FY21!

Emily Ongstad, Ph.D.

SWE FY21 MAL President

emily.ongstad@gmail.com

MAL Officers

President – Emily Ongstad

Emily has been a MAL since 2012 and served as the MAL Newsletter editor from FY14-FY17. She served as MAL Secretary in FY16, as Vice President in FY 17, and as



Members at Large (MAL) FY21 Newsletter, Issue 1

Page 3

President in FY18-FY20. Emily was recognized by the Outstanding MAL Leader Award FY14 and FY15 for exceptional contributions to the MAL organization. Emily earned her Bachelor's in Biomedical Engineering from Michigan Technological University where she was an active member of the SWE collegiate section. Here she served as Vice President 2008, Industry Chair 2006-2008 and Newsletter Editor 2007- 2008. Emily received her PhD in Bioengineering from Clemson University in December 2015. She is now developing biologic drugs for cardiovascular disease at AstraZeneca in Gaithersburg, MD. Her passion is improving treatment outcomes for patients by engineering better therapies. Outside the lab work and SWE, Emily enjoys being outdoors.

Vice President – Victoria “Tori” Tinsley

Victoria (Tori) Tinsley is a technical service advisor with the Polymers Americas Group of Total Petrochemicals and Refining USA, Inc. (TPRI). Victoria provides technical expertise while leading product development and troubleshooting efforts for customers who use TPRI's polymer products in fiber and nonwoven applications, such as carpet, diapers, and medical and hygiene nonwoven fabrics and wipes. She graduated from Texas A&M University in 2005 with a B.S. in chemical engineering and a minor in French.

Victoria enjoys volunteering with several community organizations and engineering mentoring programs. She has been an active leader at all levels of SWE since joining in college and is currently the Finance Committee Chair and MAL Vice President. Victoria plays violin with the Kingwood Pops Orchestra, and she enjoys traveling, dancing, and painting with watercolors. Victoria and her husband Gavan look forward to many adventures with their young sons Cameron and Alexander.

Treasurer – Claire Shortall

Claire Shortall joined SWE as a freshman and is a charter member and past president of three sections – Princeton University, Louisiana (now Baton Rouge), and Greater New Orleans. While a member of Houston Area, Claire led the Gulf Coast Region during SWE's transition to a regional structure. She has been a MAL since relocating to central Louisiana in 1986. Her wealth of experience includes three years as Society treasurer, three years on the board of trustees, and many years on the Society's finance



Members at Large (MAL) FY21 Newsletter, Issue 1

Page 4

committee. In her roles as MAL membership coordinator and previously as SWE's new professional section coordinator, she provided guidance to others who successfully organized more than 35 sections. A life member since 1983, Claire was recognized as a Distinguished New Engineer in 1984, as a Fellow in 1995, and as a recipient of the Society's inaugural Distinguished Service Award in 2000.

Secretary – Laurel Rowse

Laurel Rowse, PE, was elected SWE MAL Secretary for FY21. Laurel is a water/wastewater engineer with expertise in mechanical process design engineering for public utility clients. She is currently open to opportunities in Starkville, Mississippi, where she recently relocated. Laurel's vision/passion is that all people have access to clean water and improved sanitation. She delivers engineering services that help clients provide clean water and wastewater treatment to their customers. Laurel has lived and worked in Florida, Texas, Mississippi, the Dominican Republic (U.S. Peace Corps), and Honduras.

Laurel has been a member of SWE as a professional since 2017 and previously was a member of SWE as a collegiate ~2004-2008. She looks forward to getting to know MAL members and to identifying and meeting MAL members' needs during this time, where many people are facing added challenges related to working from home, attending conferences virtually, and networking virtually. Laurel is also active in the Water Environment Federation and National Society of Professional Engineers/Mississippi Engineering Society organizations. Laurel's avocations include spending time in nature, running, rowing, and yoga.

Outreach Director – Stacey Culver

Stacey Culver is a SWE Fellow and Life member and has served in various capacities at the section, region and society levels. She previously served as the MAL awards coordinator and most recently as the MAL Financial Assessment Chair. She lives in the Charlotte, NC area and is a MAL by choice and has supported the MAL organization for over 10 years.

Since she retired, Stacey has volunteered at Levine Cancer Institute teaching knitting and crocheting to patients through their Healing Arts Program as well as fundraising for the Leukemia Lymphoma Society. She also knits shawls and scarves for her church and is a member of their Knots of Love outreach program.



Members at Large (MAL) FY21 Newsletter, Issue 1

Page 5

Communications Director – Rosemarie “Roe” Trausch

This is my first year of serving SWE MAL Executive Council. My focus is to bring new ideas and concepts to all SWE members. I have worked in manufacturing for over 30 years with Alcoa, Sony, and now Abbott. I have experience from production, engineering, and quality standpoints. My passion is sharing my knowledge with new engineers and college students. My background has placed me in many jobs that were not considered appropriate for women, but I was able to show women can do it. I volunteer for outreach programs so I can share my knowledge and skill set with children from elementary school to college. I look for opportunities to donate old manufacturing and lab equipment to schools. I'm looking forward to serving you.

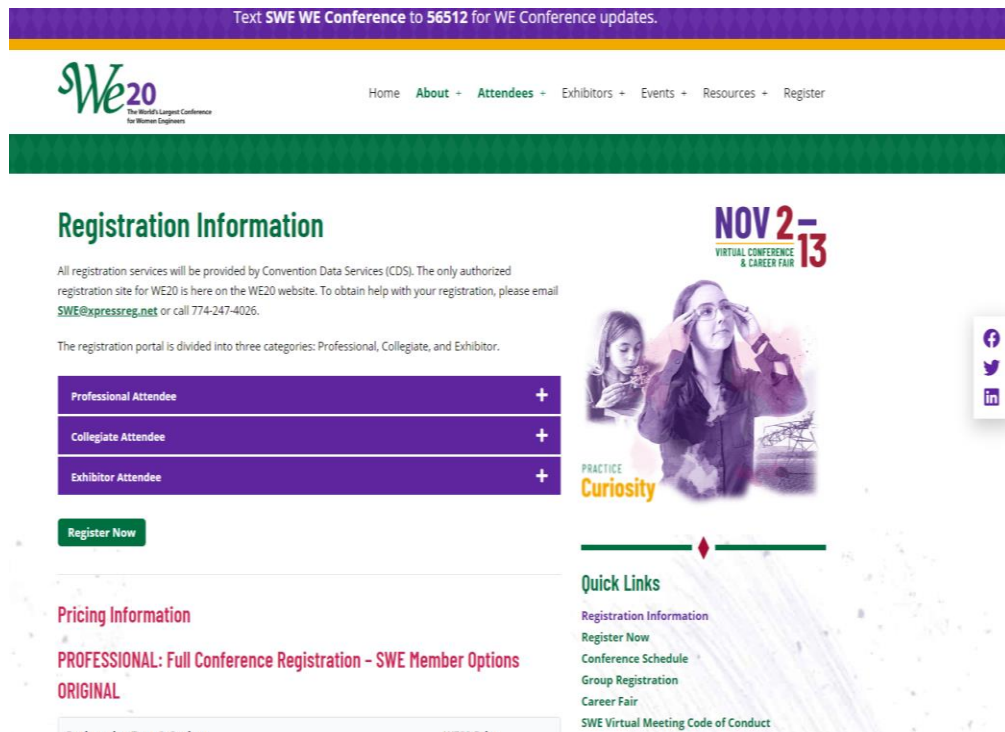
Don't forget to register for SWE20 Conference-

WE20 is virtual with lots of opportunities from the career fair, special speakers and outreach programs. Keynote speakers: Laura Maxwell, Sundari Mitra, Jennifer Rumsey, and Linda DuCharme. WE20 Virtual conference includes new session formats: Live session, Semi-live session, On-demand sessions.

<https://we20.swe.org/about/registration-information/>

Members at Large (MAL) FY21 Newsletter, Issue 1

Page 6



Text SWE WE Conference to 56512 for WE Conference updates.

WE20
The World's Largest Conference for Women Engineers

Home About Attendees Exhibitors Events Resources Register

Registration Information

All registration services will be provided by Convention Data Services (CDS). The only authorized registration site for WE20 is here on the WE20 website. To obtain help with your registration, please email SWE@expressreg.net or call 774-247-4026.

The registration portal is divided into three categories: Professional, Collegiate, and Exhibitor.

- Professional Attendee +
- Collegiate Attendee +
- Exhibitor Attendee +

[Register Now](#)

NOV 2-13
VIRTUAL CONFERENCE & CAREER FAIR

PRACTICE Curiosity

Quick Links

- Registration Information
- Register Now
- Conference Schedule
- Group Registration
- Career Fair
- SWE Virtual Meeting Code of Conduct

Pricing Information

PROFESSIONAL: Full Conference Registration - SWE Member Options
ORIGINAL

MALs to Receive SWE Awards at WE20

Several MALs will be recognized this year by The Society. Please give these recipients an air high five!

Emerging Leader Award: Karen E. Roth, Air Force Research Laboratory

Fellow Grade: Cynthia S. Reid, P.E., Parker-Lord

Outstanding SWE Counselor Award: Rebecca M. Reck, Ph.D., University of Illinois at Urbana-Champaign

SWE Distinguished New Engineer Award: Emily L. Ongstad, Ph.D., AstraZeneca

Patent Recognition Award (2 MALs were among the 224 SWE members recognized in the first year of this award): Diane L. Peters, Ph.D., P.E., F.SWE, Kettering University; and Victoria Rose Tagarelli, Lockheed Martin Corporation



Members at Large (MAL) FY21 Newsletter, Issue 1

Page 7

Have you done something spectacular – Please take a few minutes to learn about our awards system at <http://societyofwomenengineers.swe.org/awards> or <http://mal.swe.org/awards--grants.html> You can set a goal for 2021 to have your name added to our list of award winners.

MAL AWARDS

The MAL awards program was introduced in the spring of 2013 and updated in Spring of 2020. Details for the MAL awards program can be found on the SWE website. Nomination packages are not needed for MAL awards; All eligible MALs in good standing for the fiscal year in which they are nominated will be considered.

All MALs that write and have an article published in the MAL newsletter are automatically eligible for the Newsletter Contributor Recognition and the Best Newsletter Article Awards. Submit an article to Rosemarie Trausch @ rosemarie.trausch@abbott.com

If you participate in an outreach event or activity please add them to the Outreach Metric Tool. All MALs that participated in outreach and have logged their activities in the Outreach Metric Tool are automatically eligible for the Outreach Award. If you have questions related to this award or the Outreach Metric Tool contact Stacey Culver at staceyc@gatheringwaters.com

STEP AHEAD

Women in Manufacturing

The annual STEP Ahead Awards recognized women in science, technology, engineering, and production careers who exemplify leadership within their companies. The Institute's STEP Ahead Awards gives women across the country a platform to showcase the incredible opportunities the industry has to offer - whether they are running the company, designing the next big product, or testing innovations on the shop floor.



Members at Large (MAL) FY21 Newsletter, Issue 1

Page 8

The STEP focus

Women's Initiative is the nation's marquee program to close the gender gap in manufacturing. STEP works to foster a 21st-century manufacturing workforce by empowering and inspiring women in the manufacturing industry through recognition, research, and leadership, as well as motivating alumnae to pay it forward by mentoring the next generation. The goal is to shrink the gender gap and increase innovation by building networks and developing skills for women in the industry and to identify and elevate the role models who can inspire the next generation.

Please consider reviewing the requirements and let's get you nominated for an award.

For additional information check

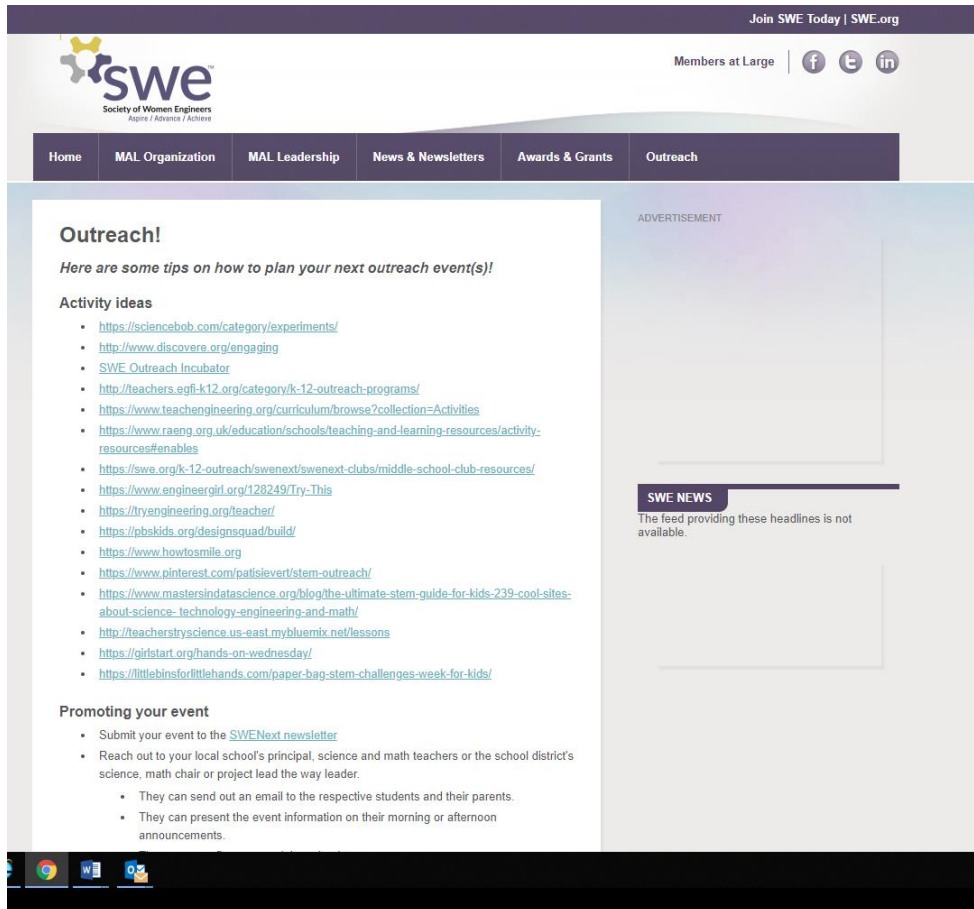
<https://www.themanufacturinginstitute.org/women/>

OUTREACH

In the year 2020 and most likely 2021, outreach takes on a whole new perspective. There is still a need for outreach activities and SWE has great tools on the MAL website to help with setting up your outreach program. You will find Activity ideas, how to promote your event, Parent-Educator Resources, Funding, how to recap / after the event, and additional resources. All the tools you need to do a great job on day one are available to you. Please visit <http://mal.swe.org/outreach>. Also, review the MAL Outreach newsletter that will be emailed quarterly for success stories, ideas and other outreach information.

If you need some extra help or have ideas contact Stacey Culver, our outreach director. She is looking forward to helping you.

<http://mal.swe.org/outreach.html>



Join SWE Today | SWE.org

Members at Large | [f](#) [t](#) [in](#)

Home | MAL Organization | MAL Leadership | News & Newsletters | Awards & Grants | Outreach

Outreach!

Here are some tips on how to plan your next outreach event(s)!

Activity ideas

- <https://sciencebob.com/category/experiments/>
- <http://www.discovera.org/engaging>
- [SWE Outreach Incubator](#)
- <http://teachers.egfi-k12.org/category/k-12-outreach-programs/>
- <https://www.teachengineering.org/curriculum/browse?collection=Activities>
- <https://www.raeng.org.uk/education/schools/teaching-and-learning-resources/activity-resources#enables>
- <https://swe.org/k-12-outreach/swenext/swenext-clubs/middle-school-club-resources/>
- <https://www.engineergirl.org/128249/Try-This>
- <https://tryengineering.org/teacher/>
- <https://pbskids.org/designquad/build/>
- <https://www.howtosmile.org>
- <https://www.pinterest.com/patsilevert/stem-outreach/>
- <https://www.mastersindatascience.org/blog/the-ultimate-stem-guide-for-kids-239-cool-sites-about-science-technology-engineering-and-math/>
- <http://teacherstryscience.us-east.mybluemix.net/lessons>
- <https://girlstart.org/hands-on-wednesday/>
- <https://littlbinsforlittlehands.com/paper-bag-stem-challenges-week-for-kids/>

Promoting your event

- Submit your event to the [SWE Next newsletter](#)
- Reach out to your local school's principal, science and math teachers or the school district's science, math chair or project lead the way leader.
 - They can send out an email to the respective students and their parents.
 - They can present the event information on their morning or afternoon announcements.

ADVERTISEMENT

SWE NEWS
The feed providing these headlines is not available.

Save the Date - MAL Professional Development Workshop – December 1, 2020 from Noon-1:30PM Central

We are excited to introduce virtual professional development workshops for the MALs and our goal is to have 2 or 3 sessions this year. Please mark your calendars and make plans to join us December 1 from noon-1:30pm central for our first workshop. We are confirming the speaker and topic, and will have more details as well as a registration link for you coming soon.

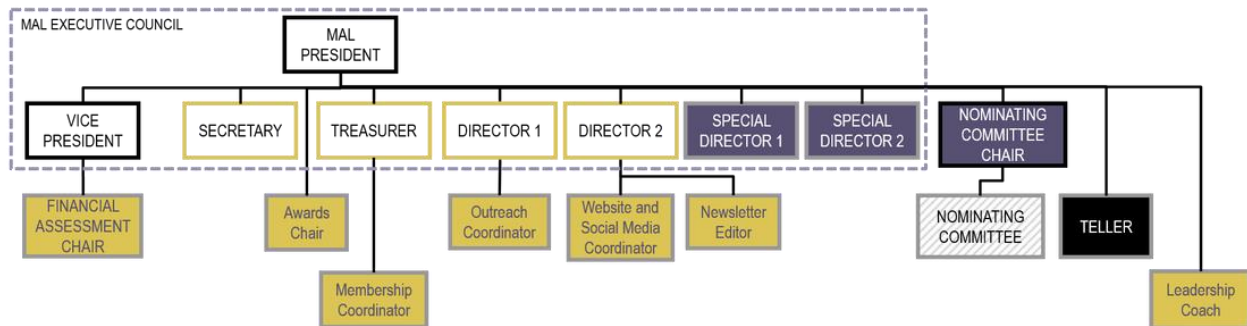
Members at Large (MAL) FY21 Newsletter, Issue 1

Page 10

MAL Organization Structure FY20 and Beyond

The proposed MAL bylaws were approved by the MAL council in October 2018 and approved by the Society Secretary on December 2, 2018. The [new bylaws](#) went into effect on July 1, 2019. Please contact the MAL president at mal-president@swe.org with any questions or concerns.

MAL Leadership Structure



KEY

- CAPS – indicates position established in bylaws
- Fill color indicates mechanism of installation: White - Elected by MAL membership; Purple – Elected by MAL Executive Council, Gold – Appointed by President with approval of Executive Council, Black – selected by nominating committee; Grey hash – appointed by nominating committee chair
- Outline color indicates member eligibility: Black – Professional members; Gold – Professional members or collegiate members (with approval of EC) who qualify for professional membership; Grey – all MAL members
- Lines between boxes indicate reporting structure

What are the major changes to the MAL leadership structure in the new bylaws?

The MAL council was dissolved, and representative positions were eliminated. The MAL executive committee and MAL council have been replaced by the MAL executive council as the voting and strategic body of the organization. Two director and two special director positions were added to the executive council to lead key functional areas. The functional areas, however, are not specifically designated, allowing flexibility as the organization changes.

A nominating committee was established to help in the election process, and all MAL members are responsible for electing the MAL officers and directors.

The work done by committee chair/coordinator positions will continue, as these are key functional areas of the MAL organization that provide value for our members. However, directors, instead of committee chairs, may be responsible for some of this work. Only the financial assessment committee is designated in the bylaws and our bylaws give us



Members at Large (MAL) FY21 Newsletter, Issue 1

Page 11

the power to establish other committees as necessary for these and other functional areas important to our members.

How do these changes affect the function of the MAL organization?

There are few changes to the way the MAL organization operates. The MAL executive council (new voting body) is smaller and absorbed duties of both the past MAL executive committee and MAL council (i.e. no functions are lost with this change). A MAL nominating committee is established to make the election process more robust and assist in the development of our leadership pipeline.

Current committee chair/coordinator positions have continued, though some are incorporated into director positions. There is no change in key functional areas (outreach, communications like newsletter, website, and social media, awards, etc.). MAL representative positions were eliminated, so the communication channels of the MAL organization have changed.

Can collegiates still hold MAL leadership positions?

Yes. Collegiates had the ability to be involved in MAL leadership in the past and do in the new structure as well. Undergrad collegiates may hold most committee chair/coordinator positions, as well as special director positions. Graduate collegiates (typically members who do meet the qualifications of a professional member) may hold any position except president, vice president, and nominating committee chair. A graduate collegiate who wants to hold the position of secretary, treasurer, or director requires the approval of the executive council.

What other changes were made to the bylaws?

The remaining changes are relatively minor and include changes to the timing of elections, and changes to the way elections are performed. The MAL membership is now responsible for electing the members of the executive council. And, all MAL members will vote on future proposed amendments to the bylaws.



Members at Large (MAL) FY21 Newsletter, Issue 1

Page 12

Looking forward to our second newsletter – Our focus will be on WE20 conference, diversity and how we can help each other through these trying times.

MAL Leadership Contact list

MAL Officers		
President	Emily Ongstad	emily.ongstad@gmail.com
Vice President	Victoria "Tori" Tinsley	victoriatinsley.swe@gmail.com
Secretary	Laurel Rowse	laurel.rowse@gmail.com
Treasurer	Claire Shortall	claire.shortall@yahoo.com
Outreach Director	Stacy Culver	staceyc@gatheringwaters.com
Commutation Director	Rosemarie "Roe" Trausch	rosemarie.trausch@abbott.com

Please feel free to reach out to us regarding question or concerns. We will do our best to get back to you within 24 hours. Thanks for your support.

Find us on Social Media

You can find SWE on Facebook, Twitter and Instagram. If you would like updates on local and national conferences, please sign up on our social media accounts and start sharing your experiences. We are looking forward to seeing your updates.



Members at Large (MAL) FY21 Newsletter, Issue 1

Page 13

Writers Wanted

If you would like to make some difference in other people's lives and maybe a difference in the World write an article. If you think it's important to you, there is an audience waiting to read it. This is a great team building idea to brain storm and then develop a topic and then flesh out the article. Start today and then email it to rosemarie.trausch@abbott.com. It could get published in our next newsletter and might win the MAL newsletter contributor or best article award!